



AmeriCorps

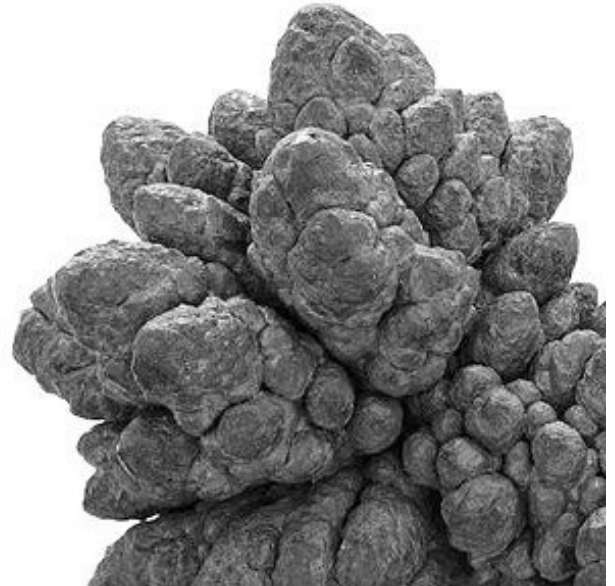


Lead in New Jersey

Presented by: Americorps NJWAP Sheyla Casco

History of Lead in Drinking Water

- Lead has been in drinking water since the invention of plumbing
- Lead pipes were identified as a source of lead poisoning as early as the late 1800s, but no effort to ban or eliminate lead happened until the 1920's
- Today we are aware of the negative impacts lead consumption has on human health and are taking steps to address this widespread issue.



Health Effects of Lead Consumption

- Lead presents health concerns for all people of **all ages**, but particularly **pregnant people**, infants and young children.
- If consumers live in homes, or communities where lead is in contact with drinking water, they may be at risk of exposure.



Infants and Children

- Behavior and learning problems
- Lower IQ and Hyperactivity
- Slowed growth and development
- Hearing Problems • Anemia

Prevent Childhood Lead Poisoning

Exposure to lead can seriously harm a child's health.



Damage to the brain and nervous system



Slowed growth and development



Learning and behavior problems



Hearing and speech problems

This can cause:

- Lower IQ
- Decreased ability to pay attention
- Underperformance at school



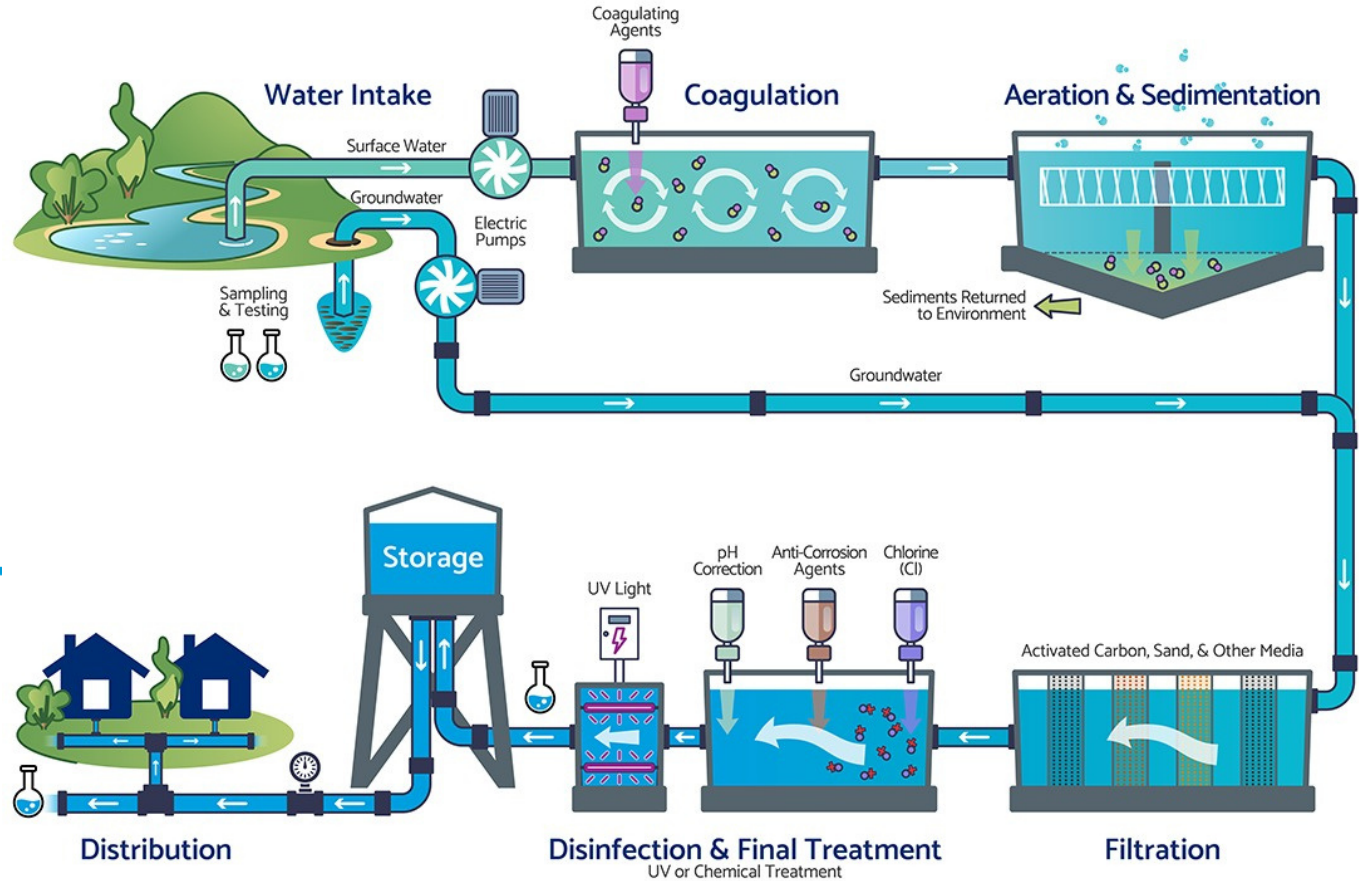
Lead can be found throughout a child's environment.

Developing Fetuses and Pregnancy



- Cause low birthweight and premature birth
- Harm fetal brain, kidney, and nervous system development
- Increase the likelihood of learning or behavioral problems; and
- Increase the risk of miscarriage

Surface Water Treatment Process



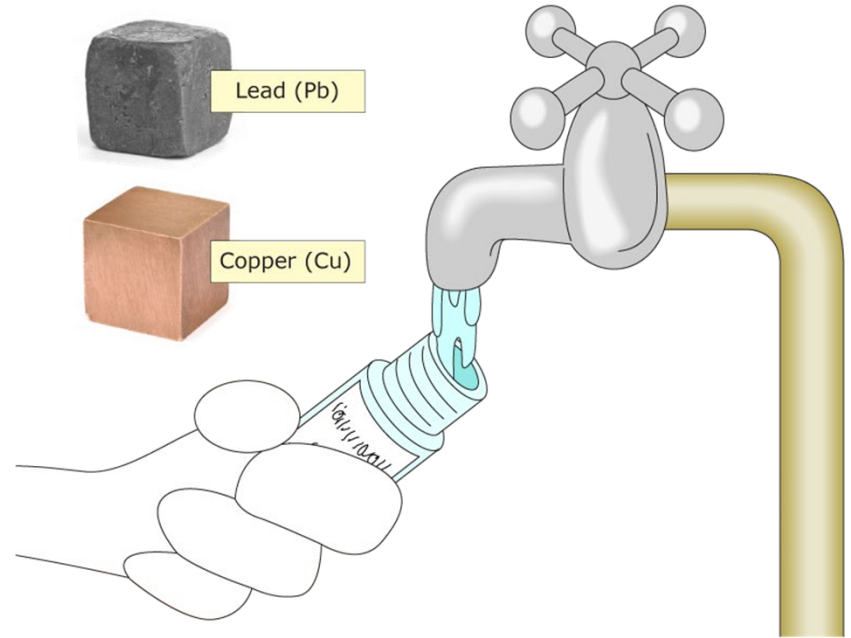
How Does Lead Get Into Drinking Water?

- Lead can enter drinking water when plumbing materials that contain lead corrode, especially where the water has high acidity or low mineral content that corrodes pipes and fixtures.
- The most common sources of lead in drinking water are lead pipes, faucets, and fixtures



And as a result, lead was banned in 1986!

- The EPA prohibited the “use of any pipe or plumbing fitting, any solder or any flux” after June of 1986 for any residential or non-residential facilities that provided drinking water for human consumption.
- A good first step, but what about the lead piping and plumbing already in use?



New Jersey's Lead Service Line Replacement Law

- On July 22, 2021, the Governor signed legislation into law for mandatory lead service line replacement, “NJ Bill A5343/S3398”, P.L.2021, Ch.183, effective immediately upon signature.
- Public community water systems are required to inventory and replace all known lead service lines and address all service lines of unknown materials in their service areas by July 22, 2031. The legislation also bans partial lead service line replacements.



Identifying LSLs in the Home

Lead



A dull, silver-gray color that is easily scratched with a coin.
Use a magnet - strong magnets will *not* cling to lead pipes.

Galvanized



A dull, silver-gray color. Use a magnet - strong magnets *will* typically cling to galvanized pipes.

Copper



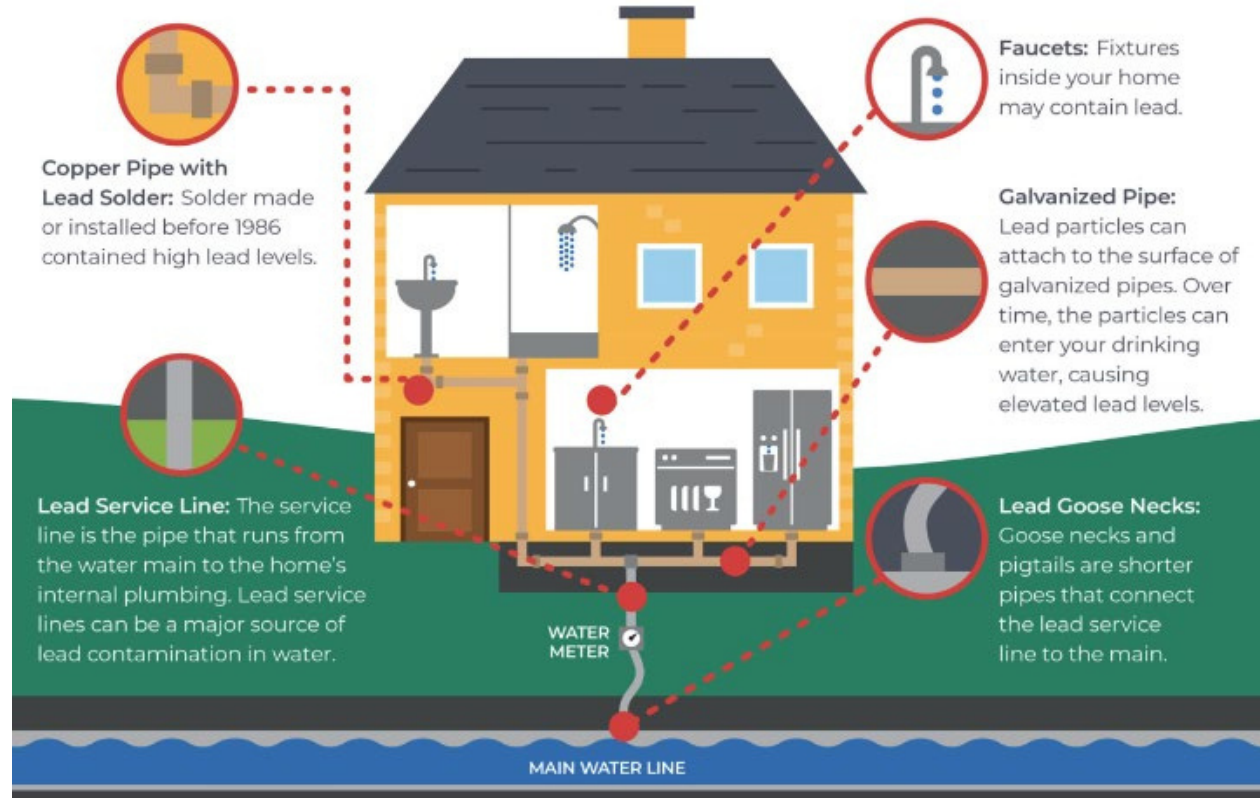
The color of a copper penny.

Plastic



White, rigid pipe that is joined to water supply piping with a clamp.

Service Line Connections





Lead Exposure Reduction

- Flush taps in your home after water has been stagnant for more than six hours. If your home has a long service line, longer flushing times may be necessary
- Consider purchasing a filter certified by NSF International to remove lead. <https://info.nsf.org/Certified/DWTU/>
- Replace plumbing fixtures and service lines containing lead
- Remove and clean aerators/screens on plumbing fixtures
- Only use cold water for cooking and preparing baby formula. Test your water and family for lead.
-