

Hunterdon County Recycling and Waste Guide 2023



Hunterdon County Health
Department
www.co.hunterdon.nj.us

Table of Contents

Recycling in Hunterdon County	3
County and Municipal Recycling Centers and Map	4-5
Municipal Recycling Contact Information	6
Subscription Service/ Haulers	7
Hunterdon County Transfer Station Directions	8-9
Plastics Recycling	10-11
Glass, Metal, and Paper Recycling	12-13
Hunterdon County Division of Solid Waste	14
Hunterdon County Complex Directions	15
Household Hazardous Waste Program	16-17
Electronic Waste Program	18-19
Paint	20-21
Batteries	22-23
Motor Oil and Smoke Detectors	24
Propane Tanks and Freon Containing Items	25
Tires	26
Prescription Medication	27
Composting and Reuse	28
Recycling No No's	29
Recycling Resources	30-31

Recycling In Hunterdon County

Recycling and Waste Disposal

Recycling is an important way for individuals and businesses to reduce the waste they generate. Hunterdon County residents and businesses have access to a variety of recycling opportunities. Each township, borough, and city manages recycling and waste disposal differently. Some municipalities provide curbside recycling and waste collection; many have subscriptions with private waste haulers; and in other areas recycling and waste can be taken by residents to their designated facility.



Municipal and Private Haulers

Residential - The primary way for residents to recycle is through curbside collection run by either private or municipal haulers. Information on the availability of curbside collection can be found in the Private Haulers section of this booklet. Residents should be aware that guidelines for what can be recycled and how to prepare and sort the recyclables vary by hauler.

Business - For over 35 years it has been the law for all businesses to recycle in Hunterdon County. Private or municipal haulers provide opportunities for businesses to recycle. See page * for a list of private haulers. Please visit Hunterdon County's webpage:

www.co.hunterdon.nj.us/261/Recycling-Solid-Waste-Services

Recycling Locations

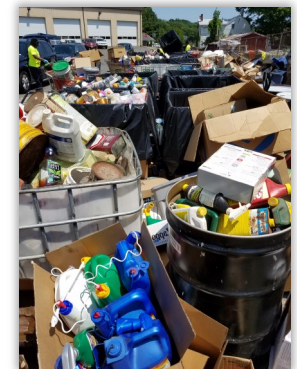
Within Hunterdon County there are municipal recycling drop-off locations. These drop-off locations provide local residents the ability to properly recycle. Collection locations and general information can be found by contacting the municipality. These locations may also host household electronic waste collection events.



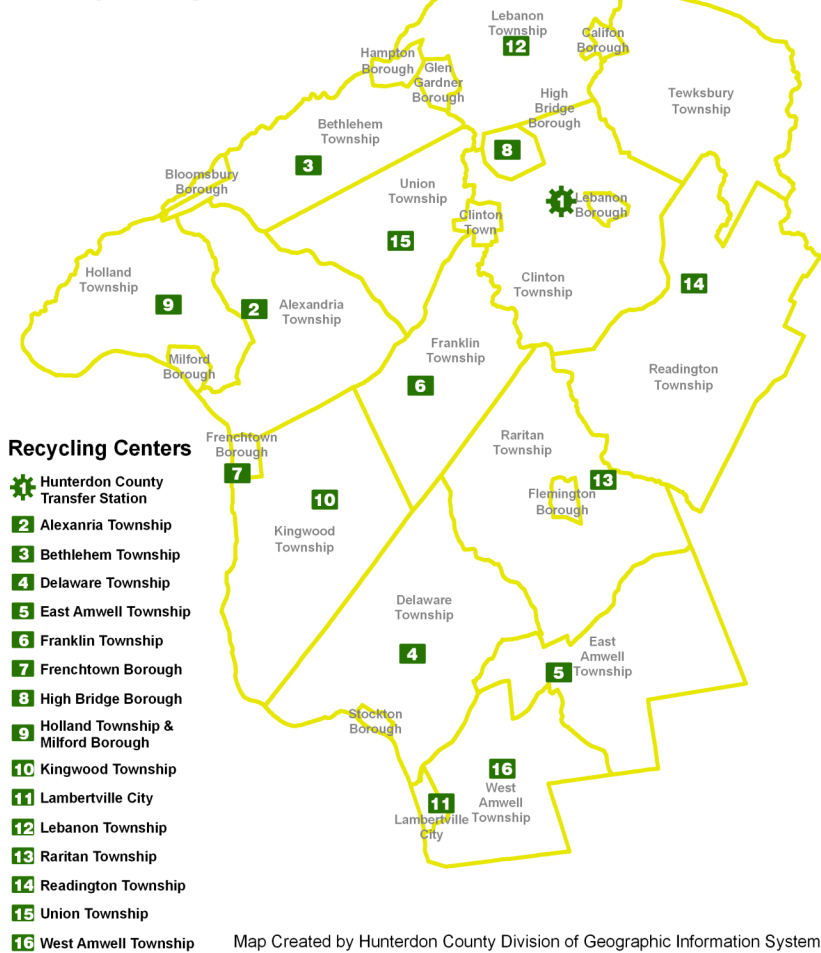
The **Hunterdon County Transfer Station** is a drop-off location that is a supplement to regular curbside recycling. It is open to all county residents to dispose of recyclables.

Household Hazardous Waste and Electronic Waste

The Hunterdon County Route 12 County Complex hosts several Household Hazardous Waste and Electronic Waste collection events. More information regarding the dates and times of specific events can be found on the Hunterdon County Website.



Hunterdon County County and Municipal Recycling Centers



Some recycling centers within Hunterdon County may only allow local residents and businesses to use their facilities. Each drop-off location provides guidelines for who may use the recycling center and what items are accepted for recycling. For more information including address, list of acceptable items, hours of operation, and special events, please contact your municipality.

FOR QUESTIONS ON YOUR MUNICIPALITY'S RECYCLING PROGRAMS

[Alexandria Township](#) 908-996-7071
[Bethlehem Township](#) 908-735-4107
[Bloomsbury Borough](#) 908-479-4200
[Califon Borough](#) 908-832-7850
[Clinton Town](#) 908-735-8616
[Clinton Township](#) 908-735-8800
[Delaware Township](#) 609-397-3240
[East Amwell Township](#) 908-782-8536
[Flemington Borough](#) 908-782-8840
[Franklin Township](#) 908-735-5215
[Frenchtown Borough](#) 908-996-4524
[Glen Gardner Borough](#) 908-537-4748
[Hampton Borough](#) 908-537-2329
[High Bridge Borough](#) 908-638-6455
[Holland Township](#) 908-995-4847
[Kingwood Township](#) 908-996-4276
[Lambertville City](#) 609-397-0110
[Lebanon Borough](#) 908-236-2425
[Lebanon Township](#) 908-638-8523
[Milford Borough](#) 908-995-4323
[Raritan Township](#) 908-782-1695
[Readington Township](#) 908-534-1058
[Stockton Borough](#) 609-397-0070
[Tewksbury Township](#) 908-439-0022
[Union Township](#) 908-735-8027
[West Amwell Township](#) 609-397-2054
[Hunterdon County](#) 908-788-1351

Hunterdon County Subscription Service

Waste & Recycling Service Providers

Cortese Disposal
(908) 233-1914
cortedisposal.com

LMR Disposal
(908) 454-4550
lmrdisposal.com

Republic Services
(908) 730-7800
republicservices.com

Sanico Inc
(908) 475-3300
sanicoinc.com

Waste Management
(800) 633-9096
wm.com



Hunterdon County Transfer Station

The Hunterdon County Transfer Station is a recycling and solid waste disposal facility located off Route 22 in Clinton Township. The Transfer Station is open to all Hunterdon County residents to drop-off recycling, waste, and bulky household items. Recycling is open during normal business hours daily. Residential bulk waste is open on Saturdays between the hours of 10:30 am and 1:00 pm. Businesses interested in waste disposal must first be registered with New Jersey's Department of Environmental Protection and then contact the Transfer Station. For more information please visit:

www.co.hunterdon.nj.us/331/Residential-Cleanup-Program-at-Hunterdon

RECYCLING HOURS FOR RESIDENTS
Monday-Friday 7:30 AM—4:30 PM
Saturday— 7:30 AM – 1:00 PM
BULK WASTE FOR RESIDENTS
Saturday—10:30 Am—12:45 PM
Transfer Station 908-236-9088

The Transfer Station is located directly across from Spencer Lane.

The map shows the location of the Hunterdon County Transfer Station, marked with a green gear icon. It is situated off Route 22, directly across from Spencer Lane. The map includes labels for various roads such as Studer Rd, Main St, East St, Beaver Ave, Old Allerton Rd, Petticoat Ln, Spencer Ln, Main St, Knox Ln, Valley Stanton Rd, Round Valley, Sand Hill, Catwaba Ln, Exxon Access Rd, and Urmatory Rd. The Lebanon Borough is also indicated.

Directions

11 Petticoat Lane Annandale, New Jersey 08801

FROM FLEMINGTON

Follow Route 31 North towards Clinton. Take the exit to the right off Route 31 which will read "78- 22 East / Newark". Stay in the right lane and take the first exit off Route 78 (Exit 18) onto Route 22 East. Proceed on Route 22 East to the second traffic light (approximately one-half mile from the exit). Turn left at the light onto Petticoat Lane. The Transfer Station is the first left on Petticoat Lane.

FROM EASTERN NEW JERSEY

Follow Route 78 West to Exit 20A (Lebanon). The exit will place you on Route 639 South (Cokesbury Road). Follow Route 639 South to the first traffic light and turn right onto Route 22 West. Take Route 22 West to the second traffic light and turn right onto Petticoat Lane. The Transfer Station is the first left on Petticoat Lane.

FROM WESTERN NEW JERSEY

Follow Route 78-22 East to Exit 18 (Route 22 East). Proceed on Route 22 East to the second traffic light (approximately one-half mile from the exit). Turn left at the light onto Petticoat Lane. The Transfer Station is the first left on Petticoat Lane.

FROM HAMPTON

Follow Route 31 South towards Clinton. Take the exit to the left off Route 31 which will read "78-22 East / Newark". Stay in the right lane and take the first exit off Route 78 (Exit 18) onto Route 22 East. Proceed on Route 22 East to the second traffic light (approximately one-half mile from the exit). Turn left at the light onto Petticoat Lane. The Transfer Station is the first left on Petticoat Lane.

PLASTICS RECYCLING

Plastics are usually marked with a number surrounded by the recycling symbol. That number designates the type of plastic used for packaging. Hunterdon County residents can then use this information to determine whether or not certain plastic types are collected for recycling in their area. The following information summarizes seven different types of commonly used plastics with some product examples:



1. PET or PETE (polyethylene terephthalate)
examples: mouthwash, vegetable oil, water, soda, and peanut butter containers



2. HDPE (high density polyethylene)
examples: milk and water jugs, laundry detergents, shampoo, and motor oil containers



3. V (Vinyl) or PVC
examples: clear food packaging, siding, cooking oil bottles, rigid piping, vinyl records



4. LDPE (low density polyethylene)
examples: flexible container lids, most plastic wraps, bottles



5. PP (polypropylene)
examples: yogurt containers, syrup, ketchup, medicine bottles, caps, and straws



6. PS (polystyrene)
examples: CD cases, insulation, light switch plates, egg cartons, foam packing, and food containers



7. OTHER
examples: sunglasses, DVDs, 5-gallon water bottles, baby bottles, milk crates, and electronic casing

IMPORTANT NOTE: Just because it has a symbol it does not mean that it can go in the bin. Be sure to check with the hauler.

Rinse Food and Waste From All Plastic!

RECYCLE: (Please rinse)

- Water Bottles, Juice Containers, etc.
- Detergent Containers, etc.
- Mustard, Ketchup, Mayo Containers, etc.
- Shampoo, Lotion Containers, etc.
- Plastic Clamshell Containers (fruit, vegetable, bakery)



IMPORTANT NOTE: The plastics listed above may not be accurate for your particular hauler, but are accepted at the Hunterdon County Transfer Station.

Items that should not be placed in your recycling bin. Check with local businesses, stores, and schools to see if they participate in the reuse of the following:

- Plastic Bags or Other Plastic Film (Grocery Store)
- Small Appliances (Electronic Waste Collection Day)
- Styrofoam Packing (Shipping and Packing Stores)
- Packing Peanuts (Shipping and Packing Stores)
- Tanglers including hoses, hangers,



KEEP IN MIND THAT RECYCLING INFORMATION IS SUBJECT TO CHANGE. CHECK THE WEBSITE FOR UP TO DATE INFORMATION.
<https://www.co.hunterdon.nj.us/261/Recycling-Solid-Waste-Services>

GLASS RECYCLING

RECYCLE: (Please rinse)

- Clear, green, and brown jars and bottles

DO NOT RECYCLE:

- Light bulbs
- Glass plates, cups, and bowls
- Window/auto glass
- Mirrors
- Ceramic
- Cookware



METAL CONTAINER RECYCLING

RECYCLE: (Please rinse)

- Aluminum cans
- Tin/steel food and beverage containers
- Aluminum pans (clean with no food residue)
- Clean foil
- Empty aerosol cans

DO NOT RECYCLE:

- Utensils
- Coat hangers
- Metal pots, pans and bowls



Bottle and can recyclables are present in all parts of the house, not just in the kitchen. Remember to recycle empty shampoo, conditioner, soap, lotion, hair product, shaving cream, and detergent containers.

PAPER RECYCLING

RECYCLE:

- Newspaper & inserts
- Magazines
- Catalogs, phone books
- Junk mail
- Manila folders
- Envelopes
- Brown paper bags
- Office paper
- Construction paper (*all colors*)
- Hard and soft cover books (*hard covers removed*)
- Wrapping paper (*not metallic*)

DO NOT RECYCLE

- Blue prints
- Carbon copy paper
- Metallic paper
- Tissues, napkins
- Paper towels
- Paper cups
- Paper plates
- Wax paper



CARDBOARD RECYCLING

RECYCLE:

- Corrugated boxes (*boxes with wavy middle layer*)
- Single layer cardboard (*cereal boxes, pasta boxes, tissue boxes, etc.*)
- Frozen food boxes

DO NOT RECYCLE:

- Wax covered cardboard (*can scrape off wax with your finger nail*)
- Mold or food covered containers

IMPORTANT NOTE: The items listed on this page may not be accurate for your particular hauler, but are accepted at the Hunterdon County Transfer Station.

Hunterdon County Division of Solid Waste

314 State Route 12
Flemington, NJ 08822

SPECIAL RECYCLING EVENTS ARE FUNDED THROUGH THE RECYCLING ENHANCEMENT ACT GRANT. COUNTY RESIDENTS CAN SAFELY RECYCLE HHW, ELECTRONICS, PROPANE TANKS, AIR CONDITIONERS, DEHUMIDIFIERS, SMOKE DETECTORS, AND TIRES.

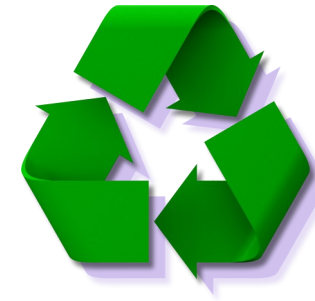
These events are held at the County Complex

IMPORTANT NOTE: Please check the website for information regarding event dates for Household Hazardous Waste and Electronic Waste.

Downloadable flyers for these events are available on the website.

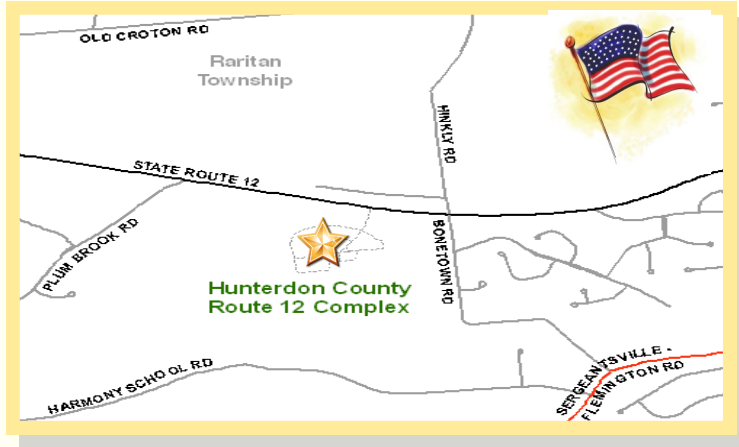
Throughout the year the County may occasionally collect propane tanks, air conditioners, dehumidifiers, smoke detectors and tires.

For more information please call the Solid Waste Division at (908) 788-1351.



DIRECTIONS TO THE ROUTE 12 COUNTY COMPLEX

314 State Route 12
Flemington, NJ 08822



FROM THE EAST (READINGTON/TEWKSBURY):

Take Route 80 to Route 287 South. Take the exit for Route 202/206 South. Stay on Route 202 South, over the Somerville Circle, to Flemington. At the Flemington Circle, take the second right-hand exit onto Route 12 West. Stay on Route 12 past 2 more circles. The Route 12 Complex is on the left, approximately 2 miles from the last circle (Follow signs for individual buildings & departments).

FROM THE NORTH (CLINTON/ROUTE 78/22):

Follow Route 31 South toward Flemington. At the Flemington Circle, take the first exit onto Route 12 West. Stay on Route 12 past 2 more circles. The Route 12 Complex is on the left, approximately 2 miles from the last circle (Follow signs for individual buildings & departments).

FROM THE SOUTH (LAMBERTVILLE/WEST AMWELL):

Follow Route 31 North to the Flemington Circle. Go 3/4 of the way around the circle and get onto Route 12 West. Stay on Route 12 past 2 more circles. The Route 12 Complex is on the left, approximately 2 miles from the last circle (Follow signs for individual buildings & departments).

HAZARDOUS WASTE

Several times a year a Household Hazardous Waste (HHW) clean-up events are held at the Hunterdon County Complex on Route 12. Hunterdon County residents only. **NO COMMERCIAL PLATES NO EXCEPTIONS.** Many household products contain corrosive, ignitable, reactive, or toxic ingredients and may be considered HHW. Improper disposal (pouring down drain, storm sewers or in some cases putting them out with the trash) is unlawful, will pollute the environment, and poses a threat to human health.

Event schedule is located on Hunterdon County's Webpage

www.co.hunterdon.nj.us/287/Hazardous-Waste-Clean-up-Days



For more information about Hazardous Waste please visit:

New Jersey DEP

www.state.nj.us/dep/

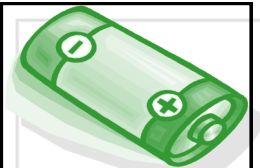
Earth 911

www.Earth911.com

NO COMPUTERS, MONITORS OR PROPANE TANKS* WILL BE ACCEPTED

- *Small 5 lb grill bottles are accepted, no 20 lb. tanks
- *Contact your local propane provider for information on propane tank exchange and removal.

Alkaline batteries now fall below federal and state hazardous waste standards and can be disposed of in the regular trash.



ACCEPTING UP TO 10 GALLONS OR 80 POUNDS

*Excess of 10 gallons or 80 pounds may incur a cost for disposal

RECYCLE:

- Lithium Batteries
- Used Motor Oil
- Automotive Batteries
- Anti-Freeze
- Fire Extinguishers
- Varnish/Stains
- Herbicides
- Gas/Oil Mix
- Mercury/Thermostats
- Oil-Based Paint*
- Insecticides
- Pool Chemicals
- Photographic Chemicals
- Fuel/Oil Sludge
- Paint Thinner
- Pesticides
- Aerosol Cans
- Battery Acid
- Diesel Fuel
- Asbestos Pipe Wrap**
- Gasoline - Kerosene
- Drain Cleaner
- Compact Fluorescent Lamps (CFLs)

**WILL NOT ACCEPT ANY OF THE FOLLOWING**

- Latex Paint
- Solid Waste
- Empty Containers***
- Explosives
- Pentachlorophenol
- Computers
- Monitors
- Propane Tanks
- Compressed Tanks
- Gas Tanks
- PCB's
- Silvex
- Radioactive Material
- Biohazardous Materials



*Consolidate oil-based paints to make full cans.

**Dampen and double wrap in plastic.

***Empty dry containers with the lids off can be disposed of with regular garbage.

ELECTRONIC WASTE PROGRAM

Several times a year residents may properly recycle unwanted electronics during Hunterdon County's Electronic Waste Collection Days held at the Route 12 County Complex. Electronic waste, or "e-waste", contains valuable materials (metals, plastics, and glass) which can be recycled and prevents toxic components (lead, nickel, cadmium, mercury, etc.) from entering our environment through leaking landfills or trash incinerators. Recycling or donating your electronic products conserves our natural resources and reduces greenhouse gas emissions that are caused by the manufacturing of raw materials.

Local municipalities and businesses may also provide other recycling opportunities for residents. Check with your local Municipality for collection services.

Most cell phone manufacturers, retailers, and service providers have ongoing recycling programs for your used wireless device.

Curbside trash and recycling haulers will not pick up old televisions or computer monitors due to federal and state regulations. Hunterdon County's residents need to discard CRTs properly.

For collection dates visit Hunterdon County's Webpage:
<https://www.co.hunterdon.nj.us/286/Electronics-Recycling>

OTHER DISPOSAL OPTIONS FOR ELECTRONICS:

RADIOSHACK: www.radioshack.com

Goodwill Industries: www.goodwill.org

Staples: www.staples.com

Best Buy: www.bestbuy.com



Electronic Waste Events

County Events are held on Saturday's several times a year.

<https://www.co.hunterdon.nj.us/286/Electronics-Recycling>

ACCEPTED:

- Computers
- Monitors
- Speakers
- Televisions
- VCR's
- DVD & CD Players
- Fax Machines
- Stereo Equipment
- Radios
- Cellular & Cordless phones

NOT ACCEPTED:

- Refrigerators
- Air Conditioners
- Other Freon Containing Items
- Wooden Speakers
- Appliances
- Hazardous Waste



Oil-based paints are considered Hazardous Household Waste (HHW) and are illegal to throw out in trash or recycling. Paints of this type are toxic, flammable, and contain harmful chemicals; older cans (1978 and before) may contain lead. For these reasons, oil-based paints must be taken to HHW collection events.

Latex paint/Acrylic (water-based) manufactured before 1990 may contain mercury and many current exterior latex paints still do. Because of this and other environmental reasons, latex paints must not be disposed of in liquid form. **Latex/Acrylic paint can be disposed of as trash if it has been dried out.**

Lead-based paint is hazardous and poisonous. Lead is highly toxic and exposure can be dangerous, especially to children who are under six years old. In 1978, the Consumer Product Safety Commission (CPSC) banned its sale for use in residences. Lead paint can create harmful lead dust if it is chipping, flaking, bumped, rubbed, or chewed. Testing your home will help you understand where lead is located and what to do about it. If you believe you have lead paint in your home, or you have questions concerning lead based products, please contact:

The National Lead Information Center

- www.epa.gov/lead/ 1(800) 424-LEAD [5323].

New Jersey Department of Health

- www.state.nj.us/health/

Consumer Product Safety Commission

- www.cpsc.gov 1 (800) 638-2772

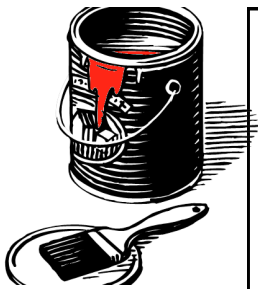


When disposing of paint, please adhere to the following:

- Determine the type of paint: latex/acrylic or oil-based.
- Consolidate oil based paints to make full cans.
- **Dry out LATEX paint and throw away in trash.**
- Bring oil-based paint to HHW event.
- Never mix paint with other chemicals.
- If you're not sure which type of paint you have, please bring it to the

STEPS TO DRY LATEX (WATER BASED) PAINT

Find a safe area away from pets and kids, remove the lid and let the paint dry in the can. You may need to leave the lids off to show your trash collector that the can is safe for collection. If you have a larger amount of latex paint, mix with kitty litter or shredded newspaper to help paint dry faster. Never pour latex paint into storm drains, onto the ground, or into streams or rivers. Never place liquid latex paint, oil-based paint, or stains in trash.



Some types of paint have a shelf life up to ten years! To test if the paint is still good, paint a small test area on a clean surface and allow to dry for 48 hours. Place a piece of masking tape over the paint and pull off. If the paint comes off on the tape, the paint is no longer good.

For additional paint information visit Morris County Municipal Utilities Authority webpage:
mcmua.com/swts.asp

Batteries



Alkaline batteries now fall below Federal and State hazardous waste standards and can be disposed of in the regular trash. Alkaline is the **only** type of battery recommended for trash.

Rechargeable Batteries

Curbside trash and recycling haulers **do not** collect *rechargeable* batteries, lead-acid, lithium, lithium-Ion, and button cell batteries. It is illegal to throw these batteries in the garbage. These types of batteries can cause fires. Hunterdon County residents and businesses must recycle these batteries properly. **AVOID THE SPARK!**

Recycling Options for Non Alkaline Batteries:

- Batteries are accepted during Hunterdon County's Household Hazardous Waste collection days.

Rechargeable batteries can be found in a variety products:

- cordless power tools
- cellular, cordless, and smart phones
- laptop computers
- digital cameras
- tablets & hand held devices
- camcorders
- video game controls
- shavers
- electric toothbrushes
- remote control toys





Lead-Acid car batteries can be returned to almost any store that sells car batteries. The lead and plastics from the batteries can then be recycled and used to manufacture new products.

Always check what type of battery you're throwing away. Lithium and lithium-ion batteries sometimes look like regular alkaline batteries. All types of lithium batteries must be recycled and should never be thrown out with trash.



Button cell batteries may contain lithium, mercuric, zinc air, and silver oxide which makes recycling a must. These batteries may be found in toys, thermometers, hearing aids, wristwatches, calculators, and many other devices.

Some businesses participating in battery recycling:

WWW.CALL2RECYCLE.ORG

LOWES

www.lowes.com

BESTBUY

www.bestbuy.com

STAPLES

Motor Oil

Motor oil is accepted at Hunterdon County's Household Hazardous Waste collection days. Visit Hunterdon County's Webpage for event schedule:

www.co.hunterdon.nj.us/287/Hazardous-Waste-Clean-up-Days

When selecting a container to hold used oil, avoid plastic bottles or containers once used for bleach, cleaners, or automobile fluids such as antifreeze. These containers may contain residues that will contaminate the used oil. Motor oil can also be recycled at most gas stations, service stations, repair facilities, and quick lubes. Recycling oil keeps our rivers, lakes, streams, and ground water safe.

According to the EPA, used oil from one oil change can contaminate one million gallons of fresh water — a year's supply for 50 people!

Smoke Detectors

Smoke detectors, the most common being ionization chamber or ICSD, are not recyclable. The inside electronic circuit board contains a small amount of Americium 241, a radioactive material. Because of this, it's important to contact the manufacturer for information regarding proper disposal. **You can also call the Hunterdon Count Health Department to find a drop off location.**



Check your smoke detector twice a year. Don't use rechargeable batteries in your smoke detector, buy new. Remember to dispose of used batteries accordingly.

For more information on smoke detectors and fire safety please visit:

The National Fire Protection Association www.nfpa.org
U.S. Fire Administration www.usfa.fema.gov

Propane Tank

Large propane tanks (20 lb. and over) are not recyclable. Please contact your local propane provider or the Health Department for information on tank exchange and removal.

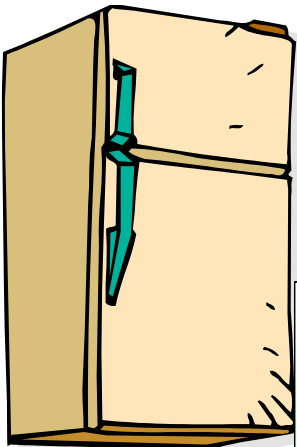


*Small empty grill bottles are accepted at Hunterdon County's Household Hazardous Waste Collection events.

Visit our webpage for event schedule:
www.co.hunterdon.nj.us/287/Hazardous-Waste-Clean-up-Days

Refrigerators, Air Conditioners, and Dehumidifiers

Refrigerators, air conditioners, and dehumidifiers need a Freon "certificate of evacuation" before recycling. Check the phone book or the Internet for more information on Freon removal. Improperly released Freon rises into the stratosphere and is broken down by strong ultraviolet (UV) light, which then releases chlorine atoms that deplete the ozone layer.



- Contact your appliance repair person, retailer, or manufacturer for proper removal of Freon.
- Hunterdon County Transfer Station will *only* accept refrigerators, air conditioners, and dehumidifiers with a certificate of evacuation.

For more information contact the EPA's Stratospheric Ozone Protection Hotline toll-free at (800) 296-1996.
www.epa.gov

Tires

Regularly checking tire pressure and rotating tires will greatly reduce tire wear and maximize your car's gas mileage. Tire maintenance will extend tire life, reduce your carbon footprint, extend gas mileage, and delay the purchase of costly new tires!

- Check with Hunterdon County's Division of Solid Waste about the availability of used tire recycling and planned recycling events.



- Bring your used tires to your local automotive service station. They may be involved with a tire recycling program or be able to help for a fee.
- Keep tires on your property out of the rain! Tires fill with water and make a perfect habitat for mosquitoes.



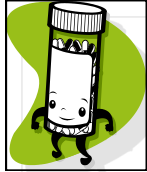
Prescription Medication



Do you have a medicine chest full of unused and expired prescription drugs? You can now properly dispose of your prescription medication in a safe and environmentally friendly manner at the Hunterdon County Justice Center and County Sheriff's office. A permanent drop-off box is conveniently located inside the County Justice Center lobby and is accessible during working hours. Remember, improper disposal of prescription medication is hazardous!

No Needles
No Liquids

Call (908) 237-6920 For Needle Disposal



Justice Center
65 Park Avenue
Flemington

Sheriff's Office
71 Main Street
Flemington

WORKING HOURS

<u>Monday</u>	8:30 AM to 4:30 PM
<u>Tuesday</u>	8:30 AM to 4:30 PM
<u>Wednesday</u>	8:30 AM to 4:30 PM
<u>Thursday</u>	8:30 AM to 4:30 PM
<u>Friday</u>	8:30 AM to 4:30 PM



For More Information Call:

Hunterdon Prevention Resources:
Phone: 908-782-3909

Hunterdon County Sheriff's Office:
Phone: 908-788-1166

Composting and Reuse

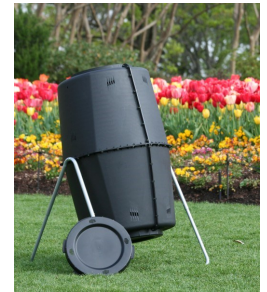
A largest remaining portion of garbage that goes to landfills is food waste. A portion of that food waste is compostable. Instead of that compostable portion of food waste being a costly environmental burden consider starting a compost pile in your own backyard. Use your fruit and vegetable trimmings, egg shells, rinds and coffee grinds just to name a few. You will reap the benefits of a free nutrient rich soil additive from your own backyard! Composting improves soil structure and moisture retention. It also contributes to healthy plant growth by providing plants with nutrients. Below is a list of reasons from Rutgers NJ Agricultural Experiment Station on why you should start composting:

- Reduces the amount of garbage going to landfills and incinerators.
- Promotes soil fertility and stimulates healthy root development.
- Increases aeration and water holding ability.
- Reduces fertilizers, chemicals and water use.
- It is quick and a fun way to help our environment.
- Saves time from bagging leaves and grass clippings.



Counter Collection Jar

For more information on getting started, here are some helpful links:
<https://njaes.rutgers.edu/fs811/>
<https://www.epa.gov/recycle/composting-home>



Compost bins can be purchased or home made. They can come in many different sizes. You can purchase from hardware stores and garden centers or make one from old pallets and fencing.



DON'T TRASH YOUR UNWANTED STUFF. DONATE OR SELL IT.

One person's trash can be another person's treasure. So before you toss it, see if someone else wants it. Remember the second "R" in "Reduce, Reuse and Recycle!"

Reuse... it's good for the community and good for the environment. Explore reuse opportunities at recycle.nj.gov



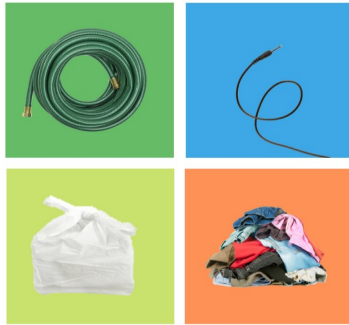
Recycling No No's

Do Not Put These Items Into The Recycling Bin

- NO PLASTIC BAGS
- NO hoses, hangers or roping
- NO shredded paper
- NO clay pots, flower pots, plant trays,
- NO clothing or textiles
- NO window panes, mirrors, broken glass, glass vases, light bulbs
- NO scrap metal
- NO hard cover books
- NO rubber, vinyl or nylon
- NO metal appliance, pots, pans
- NO waxed cardboard or waxed paper
- NO food waste
- NO pizza boxes

Don't be a Clueless Contaminator

Keep these items out of your curbside recycling bin



#RecycleRightNJ



Metal Mayhem

Keep cookware, paint cans and car parts out of your curbside recycling bin



#RecycleRightNJ



RECYCLING RESOURCES

Hunterdon County Health Department Solid Waste

314 State Route 12 County Complex

Building # 1

Flemington, NJ 08822-2900

Mailing Address-

PO BOX 2900

Flemington, NJ 08822

Webpage- www.co.hunterdon.nj.us

Telephone- (908)-788-1351

FAX- (908)-782-7510

Freon Recycling

Service Unlimited (908) 236-6157

Freon Appliance Recycling

Warren County Landfill (908) 453-2174

Mercer Wrecking & Recycling (609) 393-6775

Mulch & Wood

Green Rock Recycling (908) 713-0008

Books

New Legacy Books (908) 651-5298

Old Bicycles

Pedals For Progress (908) 638-4811

Propane Tank Exchange

Amerigas (877) 474-5542

Home Depot (908) 213-0403

WalMart (908) 730-8665

Agencies Accepting Usable Goods

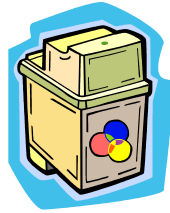
Lord's Closet (908) 534-1777

Salvation Army (800) 449-9538

Rescue Mission of Trenton (609) 695-1436

Goodwill (800) 466-3945 www.goodwill.org

Habitat For Humanity (908) 458-9770

Printer Cartridge Retailer CollectionsOffice DEPOT www.officedepot.comOfficeMax www.officemax.comSTAPLES www.staples.com**Electronic Disposal****RADIOSHACK**www.radioshack.com**LOWES**www.lowes.com**BESTBUY**www.bestbuy.com**STAPLES**www.staples.com**Goodwill Industries**www.goodwill.org**Metal Scrap Yards****M & A (908) 218-9191****Klein Recycling (908) 722-2288****Ray craft and Sons (908) 859-1990****Useful Recycling Websites**<https://recyclecoach.com>www.epa.govwww.recycle.nj.govwww.earth911.com

This guide is brought to you by the Hunterdon County Health Department with support and partnership with the Hunterdon County Board of Commissioners.

This guide includes information on how to recycle and dispose of waste materials commonly generated by Hunterdon County residents and businesses.



KEEP IN MIND THAT RECYCLING INFORMATION IS SUBJECT TO CHANGE. CHECK THE WEBSITE FOR UP TO DATE INFORMATION.

<https://www.co.hunterdon.nj.us/261/Recycling-Solid-Waste-Services>

**Hunterdon County Health Department
Division Of Solid Waste
PO Box 2900
Flemington, NJ 08822**